

2008-2010 Sign Program as of Sept. 17, 2007

HISTORY: The Downtown Development Committee (DDC) was formed in September of 2006 with a goal by the real estate property owners to strengthen the downtown business area of Parker. Several of the goals include the identification of the Parker downtown business area and to provide a geographical designation. **This goal has been met.** A secondary goal was to identify entry points to this downtown business area. **This goal has been met.** Additional and significant goals have included reaching out to the Parker Town Council in the form of a Partnership for the Downtown business area. **This goal has been met.** Finally, the Downtown Development Committee wanted to unify the description of this area and the Downtown Development Committee has unanimously embraced "Old Town Parker", as well as welcoming the currently developing Victorian area along Pikes Peak Drive as "Victorian Park". **These goals have all been achieved.** A lot of work and time has gone into this effort during a many group meetings, meetings with town officials, and multiple meetings by the sign committee. Further information regarding the Downtown Development Committee can be obtained from David Van Landschoot, Jim Anest and Steven Strain. **The Sign Program private funding efforts began late December of 06 and was completed, as to private participation, in less than five (5) months.**

IMMEDIATE GOAL: **Raise \$150,000.00 in guaranteed pledges/donations to a sign program for Old Town Parker during the next three years towards a \$500,000.00 total private/public partnership funding program.**

PLEDGE STATUS – THREE YEAR: **To date \$150,000.00 has been pledged!**

SRP Investments, LLC:	\$25,000.00	East Gateway Signage
Victorian Peaks LLC:	\$12,500.00	Victorian Park Gateway Sign
Current Engineering – In Kind Services	\$10,500.00	General Signage
Varsity Peaks LLC:	\$ 7,500.00	General Signage
Parker Station Partnership:	\$ 7,500.00	General Signage
Hess Family/Kirby Ross:	\$ 7,500.00	General Signage
Strain Family:	\$ 7,500.00	General Signage
BrokenNeck Parker Properties, Inc.:	\$ 7,500.00	General Signage
20 Mile Ltd. 7 Wells/Graves Families:	\$ 7,500.00	General Signage
Douglas County Library:	\$ 7,500.00	General Signage
Wells Fargo Bank:	\$ 7,500.00	West Gateway Signage
Thom Cook	\$ 7,500.00	General Signage
Pikes Peak Investors, LLC	\$ 7,500.00	General Signage
David Conner	\$ 4,500.00	General Signage
HollyBerry Homes, Inc.	\$ 7,500.00	Victorian Park Gateway Sign
Steve & Charlotte Fowler Family	\$ 7,500.00	Victorian Park Gateway Sign
Keller Williams Realty	\$ 7,500.00	Victorian Park Gateway Sign

DDC/Town Budget Priority (33% DDC, 66% Town)

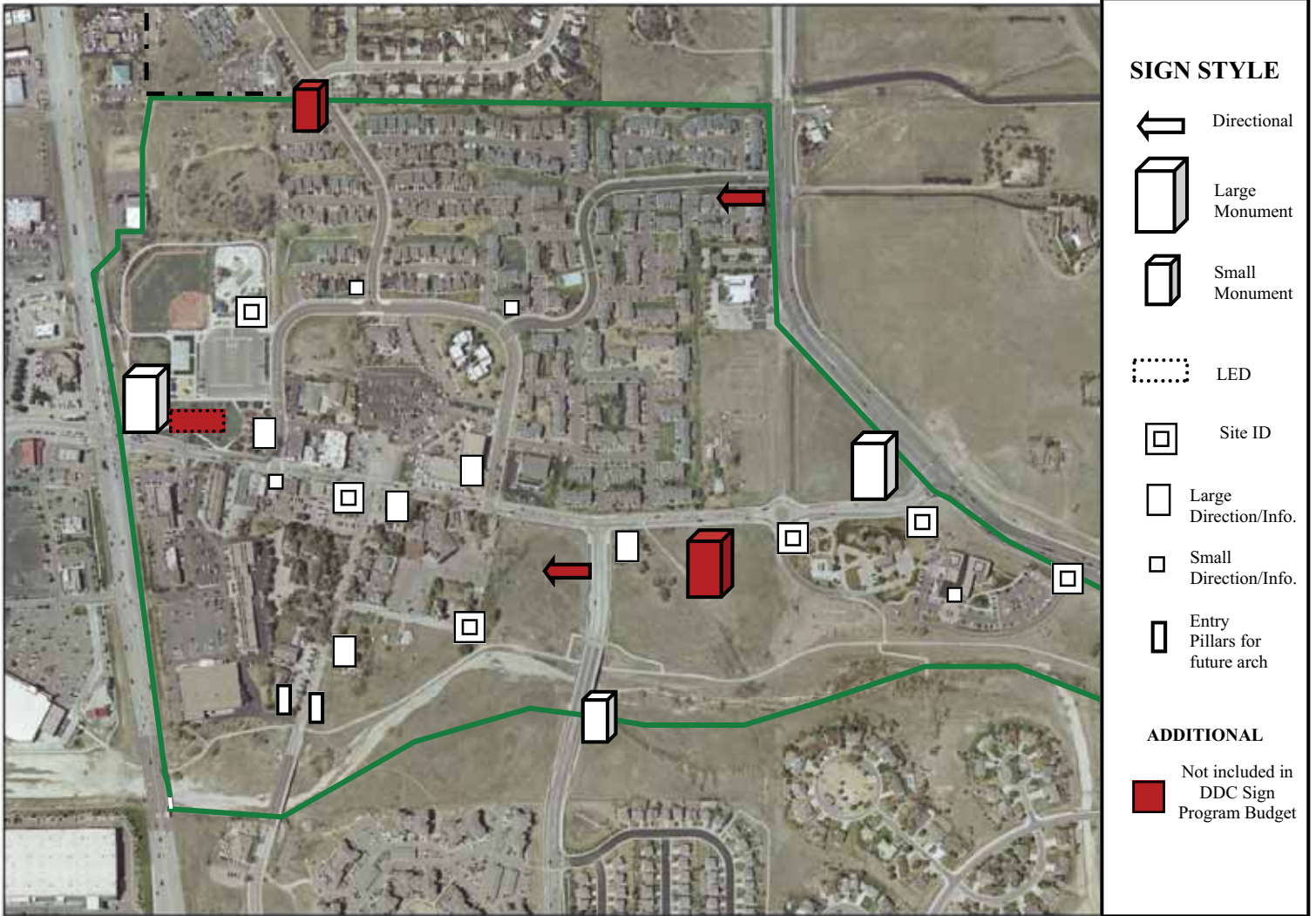
- | | |
|--|--------------------------|
| 1. Mainstreet/Parker Road | 1 st Priority |
| 2. Mainstreet/Pikes Peak Dr. | 1 st Priority |
| 3. Mainstreet/Pine Drive | 2 nd Priority |
| 4. (3) Town Hall Site IDs (Depends on LED) | 2 nd Priority |
| 5. O'Brien Pool Site ID | 2 nd Priority |
| 6. (5) Large Direction/Informational | 2 nd Priority |
| 7. Pine Lane Bridge | 3 rd Priority |
| 8. Pikes Peak Dr./Bridge V.P.Gateway | 3 rd Priority |

General Fund/Town Projects (100% Town Funded)

- | | |
|--|--------------------------|
| 9. Parking Directional Signs | 1 st Priority |
| 10. Trail Connection Signs | 1 st Priority |
| 11. Directional - Pine Dr./Summerset | 2 nd Priority |
| 12. Directional - Pine Ln/ext. of Pikes Peak Ct. | 2 nd Priority |
| 13. (4) Small Direction/Informational | 2 nd Priority |
| 14. Longs Way/North of Victorian Dr. | 2 nd Priority |
| 15. Pikes Peak Court/Extension Area | 3 rd Priority |
| 16. Cultural Arts Center (N/A) | 3 rd Priority |

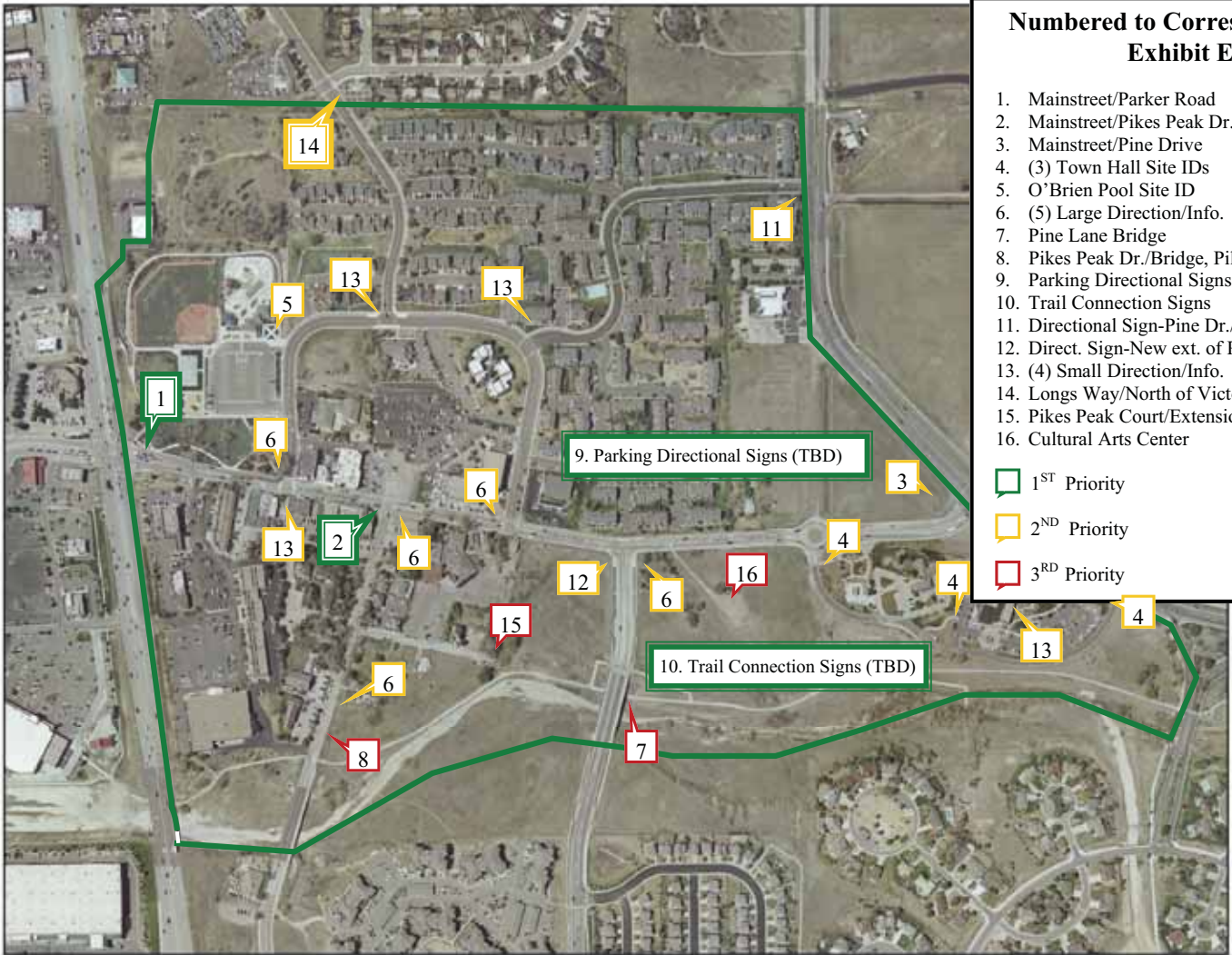
SIGNAGE

Old Town Parker



SIGNAGE

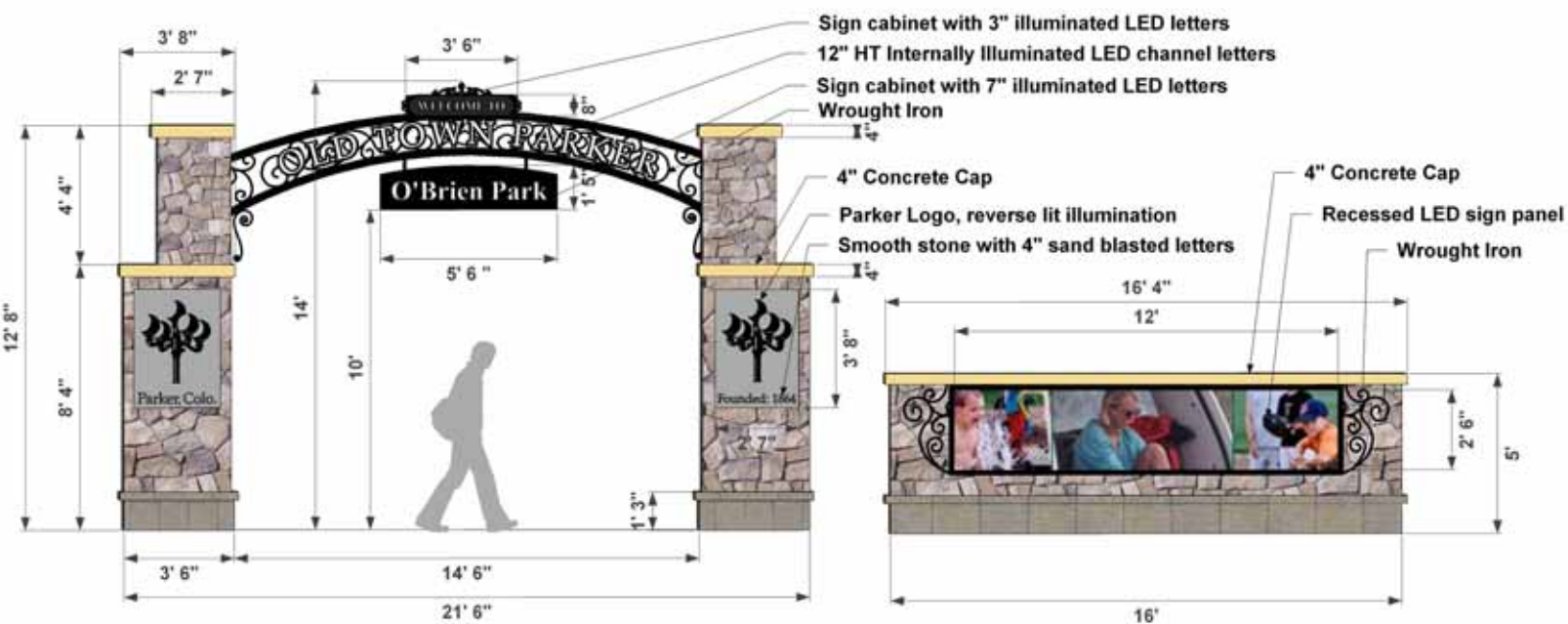
Old Town Parker



Numbered to Correspond with Exhibit E

- | | <u>Priority</u> |
|---|-----------------|
| 1. Mainstreet/Parker Road | 1 ST |
| 2. Mainstreet/Pikes Peak Dr. | 1 ST |
| 3. Mainstreet/Pine Drive | 2 ND |
| 4. (3) Town Hall Site IDs | 2 ND |
| 5. O'Brien Pool Site ID | 2 ND |
| 6. (5) Large Direction/Info. | 2 ND |
| 7. Pine Lane Bridge | 3 RD |
| 8. Pikes Peak Dr./Bridge, Pillars/Arch | 3 RD |
| 9. Parking Directional Signs | 1 ST |
| 10. Trail Connection Signs | 1 ST |
| 11. Directional Sign-Pine Dr./Summerset | 2 ND |
| 12. Direct. Sign-New ext. of Pikes Peak Ct. | 2 ND |
| 13. (4) Small Direction/Info. | 2 ND |
| 14. Longs Way/North of Victorian Dr. | 2 ND |
| 15. Pikes Peak Court/Extension Area | 3 RD |
| 16. Cultural Arts Center | 3 RD |

- 1 1ST Priority
- 1 2ND Priority
- 1 3RD Priority



Old Town Parker / O'Brien Park Gateway

Downtown Parker Signage

July 2, 2007





Old Town Parker / O'Brien Park Gateway - Day
Downtown Parker Signage

July 2, 2007





Old Town Parker / O'Brien Park Gateway - Night

Downtown Parker Signage

July 2, 2007

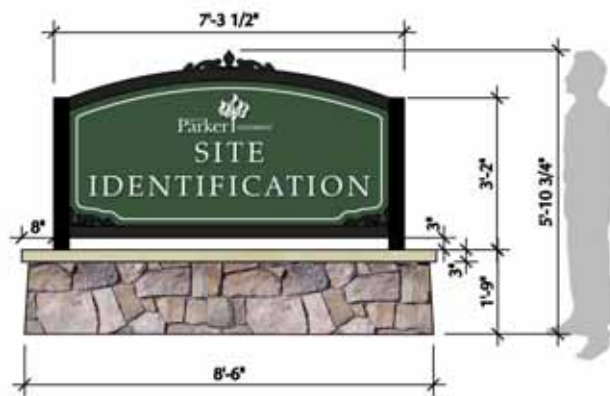




East Gateway
Downtown Parker Signage

Side Elevation
August 21, 2007





Site Identification Sign
 Downtown Parker Signage

July 23, 2007





Old Town Concept - with Stone Base
 Note: Non-illuminated, double - sided



Victorian Park Concept - with Brick Base
 Note: Non-illuminated, double - sided



Informational / Directional Signage

Downtown Parker Signage

July 23, 2007





Sign Concept - Without Base
 Note: Non-illuminated, double - sided

Informational / Directional Signage

Downtown Parker Signage

July 23, 2007





Hanging Sign

Note: Non-illuminated,
double-sided



Freestanding Sign

Note: Non-illuminated,
double-sided

Parking Signage

Downtown Parker Signage

July 23, 2007





Directional Signage
Downtown Parker Signage

July 23, 2007

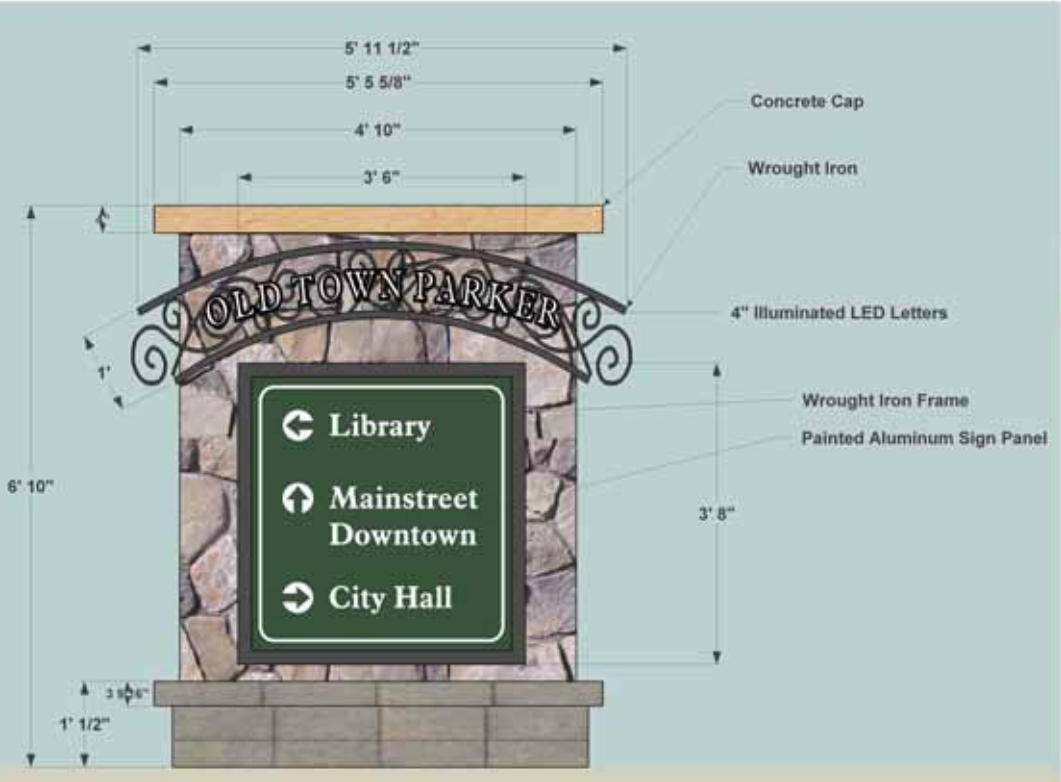




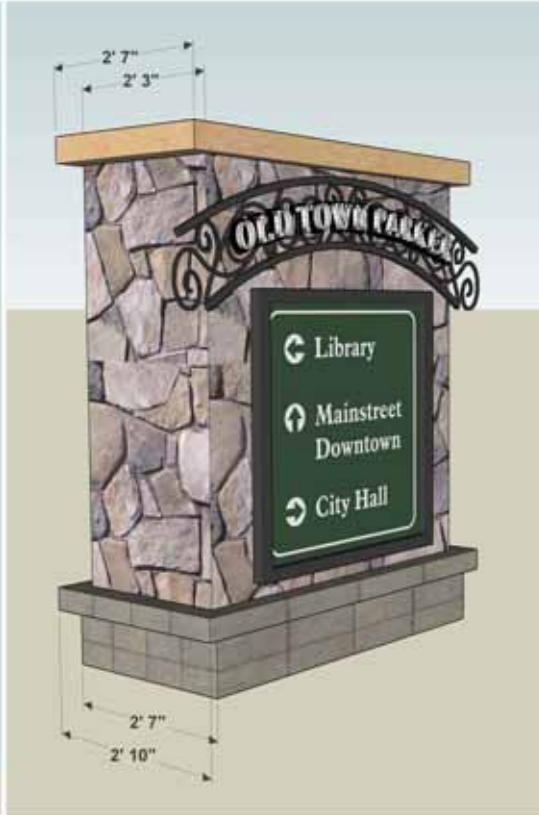
Mainstreet Center Sign
 Downtown Parker Signage

June 1, 2007





Front



Side

Small Monument
 Downtown Parker Signage

August 24, 2007



SMALL MONUMENT CONCEPT



YOUNG ELECTRIC SIGN
YESCO, COMPANY

Denver Division 303.375.8933
 3770 Juliet Street 303.375.9111 Fax
 Denver, CO 80239 www.yesco.com

Victorian Park

Address:
 OLD TOWN PARKER
 PARKER, COLORADO
Designer: *[Signature]*
Sales: RICK BELLEFUILLE
Scale: NOTED
Date: 01-08-07

Revisions:
 01.08.07 ORIGINAL DRAWING *[Signature]*
 03.06.07 ORIGINAL DRAWING *[Signature]*

Landlord Approval:

 x

Tenant Approval:

 x

Work Order #: AAA

NOTE: UNLESS OTHERWISE NOTED, ELECTRICAL RUNS OR FINAL ELECTRICAL HOOKUP CHARGES ARE NOT INCLUDED. ILLUMINATED DISPLAYS WILL BE WIRED FOR 120 VOLT POWER UNLESS OTHERWISE INDICATED.

IF VOLTAGE IS NOT 120 PLEASE INDICATE YOUR VOLTAGE HERE.

THIS DRAWING WAS CREATED TO ASSIST YOU IN VISUALIZING OUR PROPOSAL. THE ORIGINAL IDEAS HEREIN ARE THE PROPERTY OF YOUNG ELECTRIC SIGN COMPANY. PERMISSION TO COPY OR REUSE THIS DRAWING CAN ONLY BE OBTAINED THRU A WRITTEN AGREEMENT WITH YESCO. SEE YOUR SALES REPRESENTATIVE OR CALL THE NEAREST OFFICE OF YOUNG ELECTRIC SIGN COMPANY.

DESIGN#: 061016-3R1

Page: **3** of **6**